

BEGA**84 101**

Pole top luminaire



Project · Reference number

Date

Product data sheet

Application

LED pole-top luminaire with symmetrical light distribution.

For mounting heights 5000-7000 mm.

Product description

Luminaire made of aluminium alloy,
aluminium and stainless steel
Synthetic diffuser, clear
Silicone gasket
Reflector made of pure anodised aluminium
For pole top \varnothing 76 mm
Slip fitter insert depth 110 mm
Connecting cable X05BQ-F 5 G 1 \square
Cable length 7 m
LED power supply unit
220-240 V \sim 0/50-60 Hz
DC 176-264 V
During DC operation the LED power
is reduced to 50 %
DALI controllable
A basic isolation exists between power cable
and control line
Safety class I
Protection class IP 65
Dust-tight and protection against water jets
Impact strength IK08
Protection against mechanical
impacts < 5 joule
 – Safety mark
 – Conformity mark
Horizontal wind catching area: 0.18 m²
Weight: 10.0 kg

Lamp

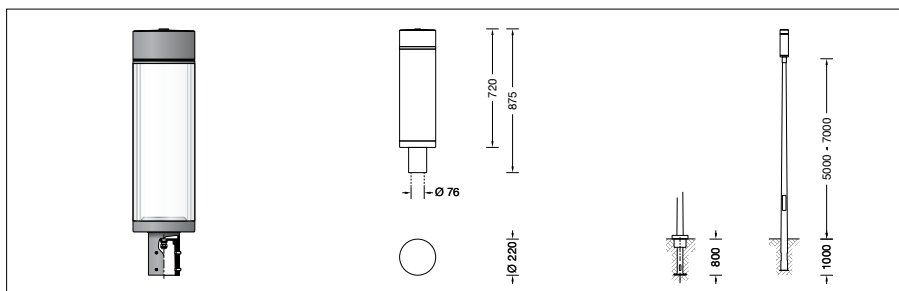
Module connected wattage	46.8 W
Luminaire connected wattage	52 W
Rated temperature	$t_a = 25 \text{ }^\circ\text{C}$
Ambient temperature	$t_{a \text{ max}} = 40 \text{ }^\circ\text{C}$

84 101 K4

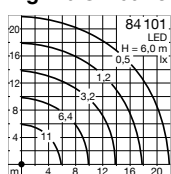
Module designation	LED-0501/840
Colour temperature	4000 K
Colour rendering index	CRI > 80
Module luminous flux	9160 lm
Luminaire luminous flux	6459 lm
Luminaire luminous efficiency	124,2 lm/W

84 101 K3

Module designation	LED-0501/830
Colour temperature	3000 K
Colour rendering index	CRI > 80
Module luminous flux	8905 lm
Luminaire luminous flux	6279 lm
Luminaire luminous efficiency	120,8 lm/W



Light distribution



Inrush current

Inrush current: 5 A / 100 μ s
Maximum number of luminaires of this
type per miniature circuit breaker:

B 10A:	27 luminaires
B 16A:	44 luminaires
C 10A:	27 luminaires
C 16A:	44 luminaires

Accessories

For this luminaire we recommend the following
BEGA luminaire poles:
Tapered aluminium poles · lacquered
with access door and C-clamp
70915 Pole with anch.section H 5000 mm
70916 Pole with anch.section H 6000 mm
70917 Pole with anch.section H 7000 mm
70794 Pole with baseplate H 5000 mm
Cylindrically stepped aluminium poles,
lacquered with door und C rail

For suitable connection boxes please see the
instructions for use of the luminaire poles.

Service life of the LED

Ambient temperature $t_a = 25 \text{ }^\circ\text{C}$
– at 340,000h: L70B50

max. ambient temperature $t_a = 40 \text{ }^\circ\text{C}$
– at 137,000h: L70B50

Ambient temperature $t_{a \text{ max}} = 50 \text{ }^\circ\text{C}$ (75 %)
LED psu: 50,000h
LED module: 50,000h

BEGA Thermal Control® protects temperature-
sensitive luminaire components by
temporarily limiting the nominal power at high
temperatures.

Article No. 84 101

LED colour temperature optionally 4000K
or 3000K
4000 K – Article number + **K4**
3000 K – Article number + **K3**

Colour graphite or silver
graphite – article number
silver – article number + **A**