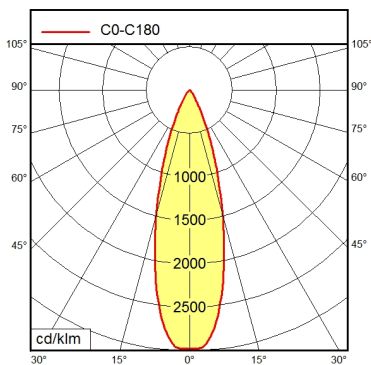
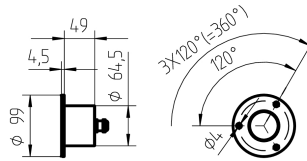


Recessed luminaire SPOT LED MCEYL 3 S

112460003-00087891

Waldmann **W**

ENGINEERS OF LIGHT



Light source	LED
Work equipment	Without
Connected load	24 V; AC; DC
Power consumption	ca. 6 W
Luminous flux	approx. 460 lm
Light type/-color	Daylight
Colour temperatur	approx. 5.400 K
Color rendering index	CRI ≥ 72
Light distribution	Wide beam; Direct; Symmetric
Beam angle	40°
Glare control	Without
System of protection	IP 67
Class of protection	III
Technology	Switchable; -
Operation	External
Housing	Aluminium; Anodised; Black
Light source cover	Borosilicate
Weight (net)	ca. 0,6 kg
Mains lead	ca. 3 m; With free stranded wires
Design	mounted version
Fastening	Screws
Dimension	76
Minimum ambient temperature	25 °C
Maximum ambient temperature	25 °C
Special features	Flood