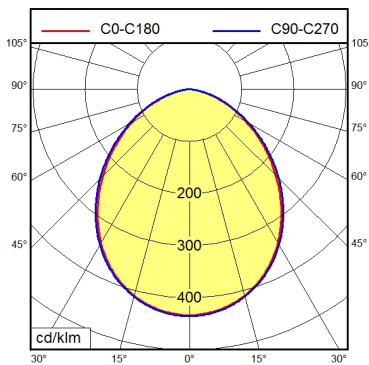
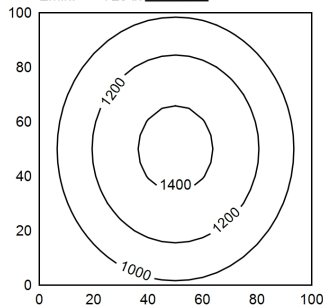




RSFPM 5/0.5 M



100 x 100 cm
Em: 1102 lx
Emax: 1447 lx
Emin: 729 lx



Light source	LED
Work equipment	Without
Connected load	22 - 26 V; DC
Power consumption	ca. 50 W
Luminous flux	approx. 3.800 lm
Light type/-color	Daylight
Colour temperatur	approx. 5.600 K
Color rendering index	CRI ≥ 80
Light distribution	Direct; Symmetric
Beam angle	90°
Chromaticity tolerance LED	< 5 SDCM
Luminance (L65)	≤ 11.000 cd/m ²
Unified glare rating (4H 8H)	≤ 25
System of protection	IP 68 - 1 m / IPX9
Class of protection	III
Technology	Two-stage switchable; -
Operation	External
Housing	Aluminium; Anodised; Aluminium coloured anodised Borosilicate
Light source cover	
Weight (net)	ca. 7,9 kg
Mains lead	Built-in plug; RSFPM 5/0.5 M
Design	mounted version
Fastening	Mounting rail; Tap hole 2xM6
Maximum ambient temperature	60 °C
Decorative contrast side parts	Metallic silver
Special features	Light forming; Connection on the rear side; Eco mode