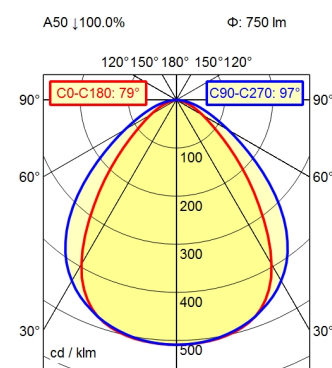
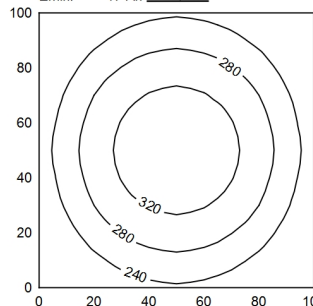


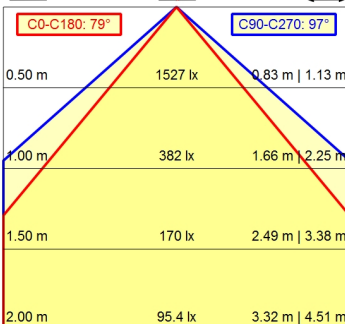
Serie 814



100 x 100 cm  $\Phi$ : 750 lm  
Em: 268 lx  
Emax: 348 lx  
Emin: 174 lx



$\Phi$ : 750 lm  $E$  [0°]



**Light source** LED  
**Work equipment** Electronic ballast  
**Connected load** 100 V; 120 V; 220 - 240 V; AC; 50 Hz; 60 Hz  
**Power consumption** ca. 9,5 W  
**Luminous flux** approx. 750 lm  
**Luminous efficiency** approx. 78 lm/W  
**Light type/color** Cold white  
**Colour temperatur** approx. 5.000 K  
**Color rendering index** CRI  $\geq$  80  
**Light distribution** Direct; Symmetric  
**Beam angle** 80°/100°  
**Chromaticity tolerance LED** < 4 SDCM  
**Luminance (L65)**  $\leq$  13.000 cd/m<sup>2</sup>  
**System of protection** IP 67  
**Class of protection** I  
**Technology** Switchable; -  
**Operation** External  
**Housing** Aluminium; Anodised; Aluminium coloured anodised  
Borosilicate; Clear  
**Light source cover** ca. 2 kg  
**Weight (net)** Built-in plug; Connection box; Serie 814  
**Mains lead** mounted version  
**Design** L-angle; Clamp  
**Fastening**  
**Dimension** A=510 mm  
**Minimum ambient temperature** -10 °C  
**Maximum ambient temperature** 55 °C  
**Special features** Eco equipment; Through-wired

LED  
Electronic ballast  
100 V; 120 V; 220 - 240 V; AC; 50 Hz; 60 Hz  
ca. 9,5 W  
approx. 750 lm  
approx. 78 lm/W  
Cold white  
approx. 5.000 K  
CRI  $\geq$  80  
Direct; Symmetric  
80°/100°  
< 4 SDCM  
 $\leq$  13.000 cd/m<sup>2</sup>  
IP 67  
I  
Switchable; -  
External  
Aluminium; Anodised; Aluminium coloured anodised  
Borosilicate; Clear  
ca. 2 kg  
Built-in plug; Connection box; Serie 814  
mounted version  
L-angle; Clamp  
A=510 mm  
-10 °C  
55 °C  
Eco equipment; Through-wired