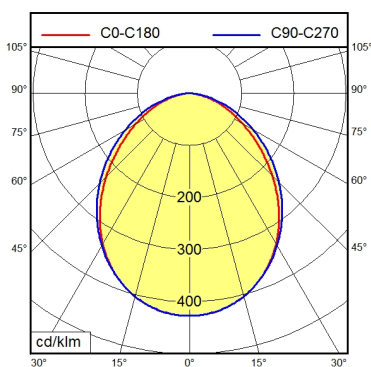
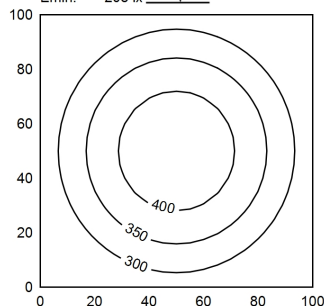




RSFPM 5/0.5 M



100 x 100 cm
Em: 325 lx
Emax: 437 lx
Emin: 208 lx
= 100 cm



Light source	LED
Work equipment	Without
Connected load	22 - 26 V; DC
Power consumption	ca. 16 W
Luminous flux	approx. 1.100 lm
Luminous efficiency	approx. 68 lm/W
Light type/-color	Daylight
Colour temperatur	approx. 5.600 K
Color rendering index	CRI ≥ 80
Light distribution	Direct; Symmetric
Beam angle	100°
Chromaticity tolerance LED	< 5 SDCM
Luminance (L65)	≤ 14.000 cd/m ²
Unified glare rating (4H 8H)	≤ 28
System of protection	IP 68 - 1 m / IPX9
Class of protection	III
Technology	Switchable; -
Operation	External
Housing	Aluminium; Anodised; Aluminium coloured anodised Borosilicate
Light source cover	
Weight (net)	ca. 2,4 kg
Mains lead	Built-in plug; RSFPM 5/0.5 M
Design	mounted version
Fastening	Mounting rail; Tap hole 2xM6
Dimension	A=420mm
Maximum ambient temperature	55 °C
Decorative contrast side parts	Metallic silver
Special features	Connection on the rear side; Diffuser