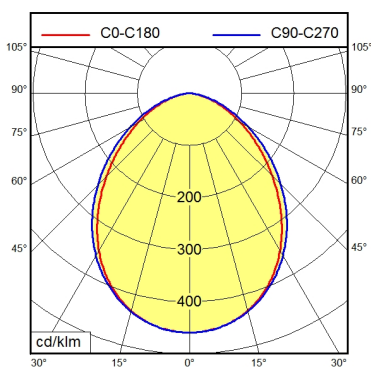
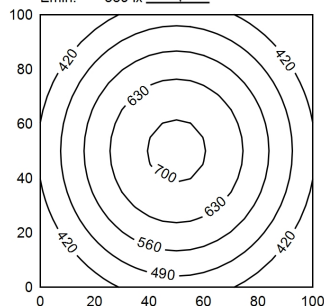




RSFPM 5/0.5 M



100 x 100 cm
Em: 531 lx
Emax: 711 lx
Emin: 339 lx
= 100 cm



| | |
|---------------------------------------|---|
| Light source | LED |
| Work equipment | Without |
| Connected load | 22 - 26 V; DC |
| Power consumption | ca. 24 W |
| Luminous flux | approx. 1.710 lm |
| Light type/-color | Daylight |
| Colour temperatur | approx. 5.600 K |
| Color rendering index | CRI ≥ 80 |
| Light distribution | Direct; Symmetric |
| Beam angle | 90° |
| Chromaticity tolerance LED | < 5 SDCM |
| Luminance (L65) | ≤ 13.000 cd/m ² |
| Unified glare rating (4H 8H) | ≤ 25 |
| System of protection | IP 68 - 1 m / IPX9 |
| Class of protection | III |
| Technology | Switchable; - |
| Operation | External |
| Housing | Aluminium; Anodised; Aluminium coloured anodised Borosilicate |
| Light source cover | |
| Weight (net) | ca. 3,6 kg |
| Mains lead | Built-in plug; RSFPM 5/0.5 M |
| Design | mounted version |
| Fastening | Mounting rail; Tap hole 2xM6 |
| Dimension | A=596mm |
| Maximum ambient temperature | 55 °C |
| Decorative contrast side parts | Metallic silver |
| Special features | Light forming; Connection on the side |