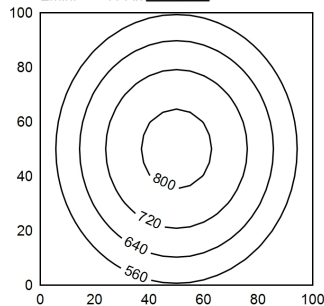


100 x 100 cm  
Em: 626 lx  
Emax: 822 lx  
Emin: 414 lx  
= 100 cm



<b>Light source</b>	LED
<b>Work equipment</b>	Without
<b>Connected load</b>	22 - 26 V; DC
<b>Power consumption</b>	ca. 32 W
<b>Luminous flux</b>	approx. 2.200 lm
<b>Luminous efficiency</b>	approx. 68 lm/W
<b>Light type/-color</b>	Daylight
<b>Colour temperatur</b>	approx. 5.600 K
<b>Color rendering index</b>	CRI ≥ 80
<b>Light distribution</b>	Direct; Symmetric
<b>Beam angle</b>	100°
<b>Chromaticity tolerance LED</b>	< 5 SDCM
<b>Luminance (L65)</b>	≤ 14.000 cd/m <sup>2</sup>
<b>Unified glare rating (4H 8H)</b>	≤ 28
<b>System of protection</b>	IP 68 - 1 m / IPX9
<b>Class of protection</b>	III
<b>Technology</b>	Switchable; -
<b>Operation</b>	External
<b>Housing</b>	Aluminium; Anodised; Aluminium coloured anodised Borosilicate
<b>Light source cover</b>	
<b>Weight (net)</b>	ca. 4,3 kg
<b>Mains lead</b>	Built-in plug; RSFPM 5/0.5 M
<b>Design</b>	mounted version
<b>Fastening</b>	Mounting rail; Tap hole 2xM6
<b>Dimension</b>	A=770mm
<b>Maximum ambient temperature</b>	55 °C
<b>Decorative contrast side parts</b>	Metallic silver
<b>Special features</b>	Connection on the rear side; Diffuser