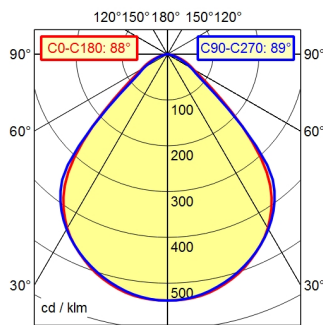
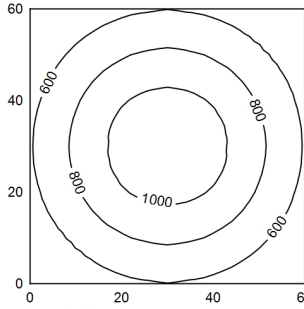


A50 | 100.0% Φ: 550 lm



60 x 60 cm Φ: 550 lm
Em: 761 lx
Emax: 1152 lx
Emin: 394 lx



H	Φ: 550 lm	E [lx]	D
0.25 m	0.48 m 0.49 m	4733 lx	
0.50 m	0.96 m 0.98 m	1183 lx	
0.75 m	1.44 m 1.47 m	526 lx	
1.00 m	1.92 m 1.96 m	296 lx	

- light source
- work equipment
- connected load
- secondary tension
- power consumption
- sec. power consumption
- luminous flux
- luminous efficiency
- light type/color
- colour temperatur
- color rendering index
- light distribution
- direct ratio
- beam angle
- chromaticity tolerance LED
- glare control
- system of protection
- class of protection
- technology
- operation
- housing
- Light source cover
- arm
- weight (net)
- mains lead
- fastening
- energy efficiency class
- special features

- LED
- electronic plug-in transformer
- 100 - 240 V; AC; 50 Hz; 60 Hz
- 24 V
- ca. 7 W
- ca. 6 W
- approx. 600 lm
- approx. 100 lm/W
- cold white
- approx. 4.000 K
- CRI ≥ 90; R9 ≥ 50
- direct; symmetric
- approx. 100 %
- 90°
- < 3 SDCM
- plastic reflector
- IP 20
- II with plug-in power supply, III without plug-in power supply
- continuously dimmable; -
- push button
- aluminium; painted; silver
- clear; plastic
- silver metallic
- ca. 0,8 kg
- ca. 3 m; mains plug; CEE 7/XVI; BS 1363; NEMA 1-15P
- adaptor (accessory); tap16; table base (accessory); table clamp (accessory)
- D
- automatic switchoff adjustable; behaviour at net recovery adjustable; push button in luminaire head

