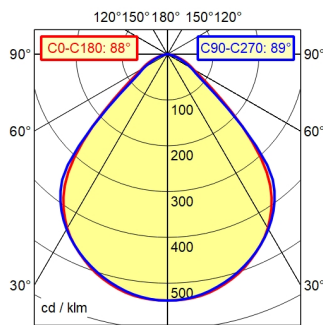
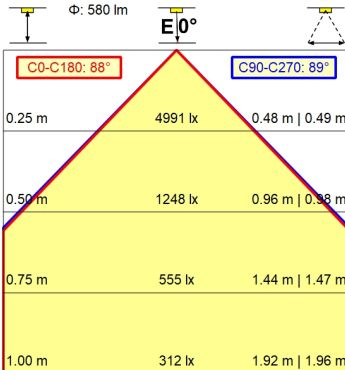
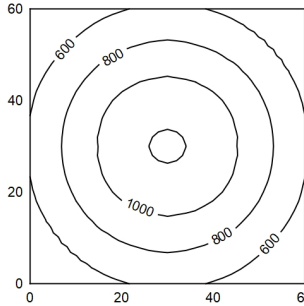


A50 | 100.0% Φ : 580 lm



60 x 60 cm Φ : 580 lm
Em: 803 lx
Emax: 1215 lx
Emin: 416 lx



- light source
- work equipment
- connected load
- power consumption
- luminous flux
- luminous efficiency
- light type/-color
- colour temperatur
- color rendering index
- light distribution
- direct ratio
- beam angle
- chromaticity tolerance LED
- glare control
- class of protection
- technology
- operation
- housing
- cover
- arm
- weight (net)
- mains lead
- fastening
- special features

- LED
- electronic plug-in transformer
- 100 - 240 V; alternating current (AC); 50 Hz; 60 Hz
- ca. 7 W
- approx. 580 lm
- approx. 96 lm/W
- warm white
- approx. 3.000 K
- CRI > 90; R9 > 50
- direct; symmetric
- approx. 100 %
- 90°
- < 3 SDCM
- plastic reflector
- II with plug-in power supply, III without plug-in power supply
- continuously dimmable; no notice
- push button
- aluminium; painted; silver
- clear; plastic
- silver metallic
- ca. 1 kg
- ca. 3 m; mains plug; CEE 7/XVI; BS 1363; NEMA 1-15P
- adaptor (accessory); tap16; table base (accessory); table clamp (accessory)
- automatic switchoff adjustable; behaviour at net recovery adjustable; push button in luminaire head

