
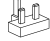

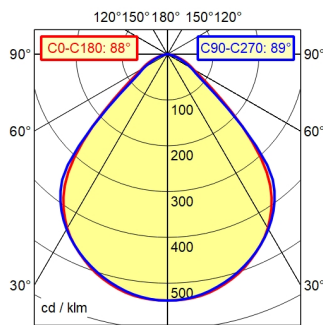
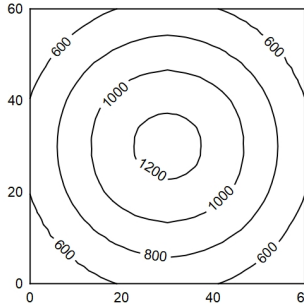


-  CEE 7/XVI
-  BS 1363
-  NEMA 1-15P

A50 | 100.0%      Φ: 600 lm



60 x 60 cm      Φ: 600 lm  
 Em: 830 lx  
 Emax: 1257 lx  
 Emin: 430 lx      = 50 cm



Φ: 600 lm      E 0°

| Height (m) | Beam Diameter (m) | Illuminance (lx) |
|------------|-------------------|------------------|
| 0.25       | 0.48   0.49       | 5164             |
| 0.50       | 0.96   0.98       | 1291             |
| 0.75       | 1.44   1.47       | 574              |
| 1.00       | 1.92   1.96       | 323              |

- light source**
- work equipment**
- connected load**
- power consumption**
- luminous flux**
- luminous efficiency**
- light type/-color**
- colour temperatur**
- color rendering index**
- light distribution**
- direct ratio**
- beam angle**
- chromaticity tolerance LED**
- glare control**
- class of protection**
- technology**
- operation**
- housing**
- cover**
- arm**
- weight (net)**
- mains lead**
- fastening**
- special features**

- LED
- electronic plug-in transformer
- 100 - 240 V; alternating current (AC); 50 Hz; 60 Hz
- ca. 7 W
- approx. 600 lm
- approx. 100 lm/W
- cold white
- approx. 4.000 K
- CRI > 90; R9 > 50
- direct; symmetric
- approx. 100 %
- 90°
- < 3 SDCM
- plastic reflector
- II with plug-in power supply, III without plug-in power supply
- continuously dimmable; no notice
- push button
- aluminium; painted; black
- clear; plastic
- Jet black
- ca. 0,8 kg
- ca. 3 m; mains plug; CEE 7/XVI; BS 1363; NEMA 1-15P
- adaptor (accessory); tap16; table base (accessory); table clamp (accessory)
- automatic switchoff adjustable; behaviour at net recovery adjustable; push button in luminaire head

