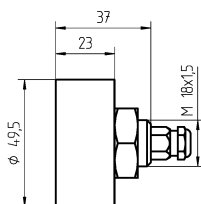
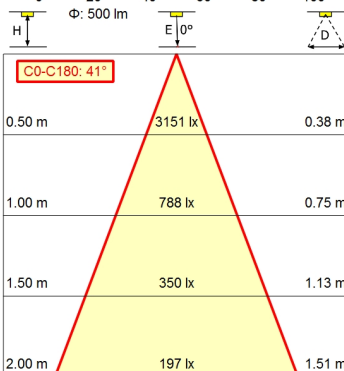
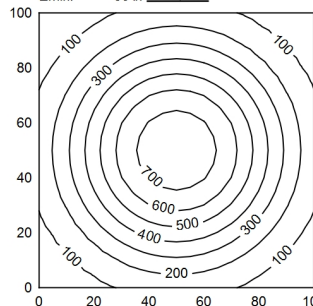
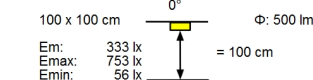
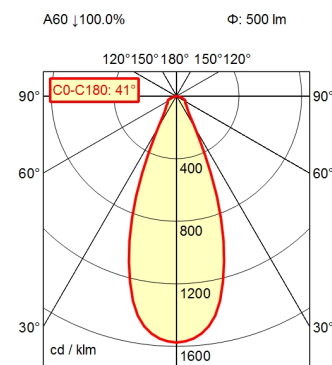


# Surface-mounted luminaire HEAD LED MCAYL 4 S

113155000-00669609



Serie 763



<b>Light source</b>	LED
<b>Work equipment</b>	Without
<b>Connected load</b>	16 - 32 V; DC
<b>Power consumption</b>	ca. 5,5 W
<b>Luminous flux</b>	approx. 500 lm
<b>Luminous efficiency</b>	approx. 90 lm/W
<b>Light type/-color</b>	Daylight
<b>Colour temperatur</b>	approx. 6.500 K
<b>Color rendering index</b>	CRI $\geq$ 80; R9 $\geq$ 10
<b>Light distribution</b>	Narrow-beam; Direct; Symmetric
<b>Beam angle</b>	40°
<b>Chromaticity tolerance LED</b>	< 6 SDCM
<b>Glare control</b>	Fresnel screen
<b>Luminance (L65)</b>	$\leq$ 80.000 cd/m <sup>2</sup>
<b>Unified glare rating (4H 8H)</b>	$\leq$ 28
<b>System of protection</b>	IP 67
<b>Class of protection</b>	III
<b>Technology</b>	Switchable; -
<b>Operation</b>	External
<b>Housing</b>	Aluminium; Anodised; Silver metallic
<b>Light source cover</b>	Borosilicate
<b>Weight (net)</b>	ca. 0,2 kg
<b>Mains lead</b>	ca. 0,15 m; Built-in plug; Serie 763
<b>Design</b>	mounted version
<b>Fastening</b>	Screwing
<b>Maximum ambient temperature</b>	25 °C
<b>Special features</b>	Spot