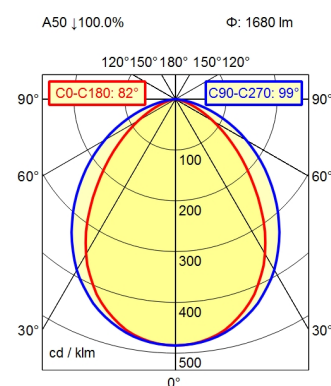
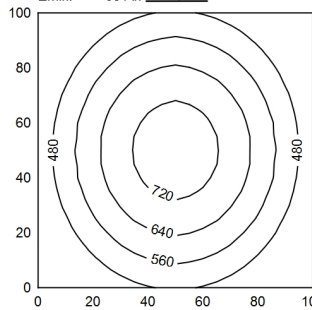




RSFM 4/0,05 P25-1



100 x 100 cm Φ : 1680 lm
Em: 557 lx
Emax: 757 lx
Emin: 351 lx



Φ : 1680 lm E [0°]

Height (m)	Beam Angle (C0-C180)	Beam Angle (C90-C270)	Light Intensity (lx)	Beam Diameter (m)
0.50	82°	99°	3259 lx	0.87 m 1.17 m
1.00	82°	99°	815 lx	1.74 m 2.34 m
1.50	82°	99°	362 lx	2.61 m 3.52 m
2.00	82°	99°	204 lx	3.48 m 4.69 m

Light source	LED
Work equipment	Without
Connected load	20 - 28 V; DC
Power consumption	ca. 16 W
Luminous flux	approx. 1.680 lm
Luminous efficiency	approx. 105 lm/W
Light type/-color	Cold white
Colour temperatur	approx. 5.000 K
Color rendering index	CRI \geq 80
Light distribution	Wide beam; Direct; Symmetric
Beam angle	90°
Chromaticity tolerance LED	< 4 SDCM
Glare control	Without
Luminance (L65)	\leq 50.000 cd/m ²
Unified glare rating (4H 8H)	\leq 28
System of protection	IP 67
Class of protection	III
Technology	Switchable; -
Operation	External
Housing	Aluminium; Anodised; Aluminium coloured anodised Borosilicate; Clear
Light source cover	
Weight (net)	ca. 0,8 kg
Mains lead	Built-in plug; RSFM 4/0,05 P25-1
Design	mounted version
Fastening	L-angle; Clamp
Dimension	A=540 mm
Minimum ambient temperature	0 °C
Maximum ambient temperature	50 °C
Special features	Through-wired

Surface-mounted luminaire MACH LED PLUS.forty MLAL 42 SD

113163000-00662735

