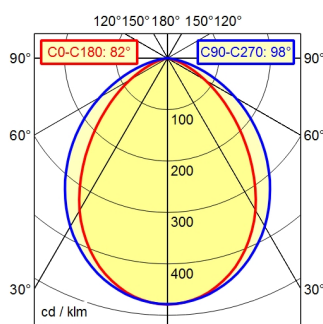


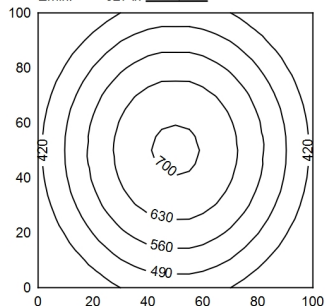
RSFM5/0,06 P

A50 | 100.0% Φ : 1600 lm

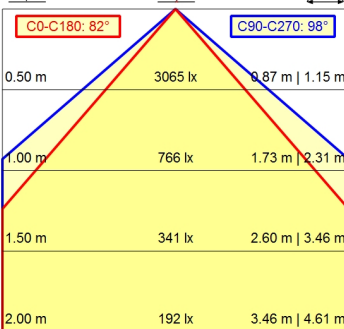


100 x 100 cm Φ : 1600 lm

Em: 521 lx
E_{max}: 705 lx
E_{min}: 327 lx



Φ : 1600 lm E | 0°



Light source	LED
Work equipment	Without
Connected load	20 - 28 V; DC
Power consumption	ca. 18 W
Luminous flux	approx. 1.600 lm
Luminous efficiency	approx. 88 lm/W
Light type/color	adjustable light colors; Cold white; Red; Green; Blue; Yellow; Magenta; Cyan
Colour temperatur	approx. 5.000 K
Color rendering index	CRI ≥ 80
Light distribution	Wide beam; Direct; Symmetric
Beam angle	90°
Chromaticity tolerance LED	< 4 SDCM
Glare control	Without
Luminance (L65)	≤ 44.000 cd/m ²
Unified glare rating (4H 8H)	≤ 28
System of protection	IP 67
Class of protection	III
Technology	Switchable; -
Operation	External
Housing	Aluminium; Anodised; Aluminium coloured anodised
Light source cover	Borosilicate; Clear
Weight (net)	ca. 0,8 kg
Mains lead	Built-in plug; RSFM5/0,06 P
Design	mounted version
Fastening	L-angle; Clamp
Dimension	A=540 mm
Minimum ambient temperature	0 °C
Maximum ambient temperature	50 °C
Special features	7 colours controllable