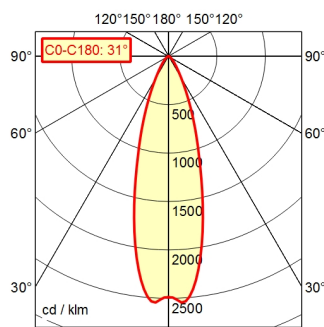


CE



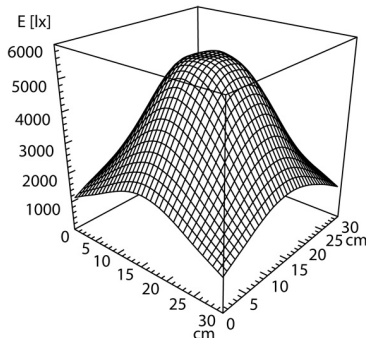
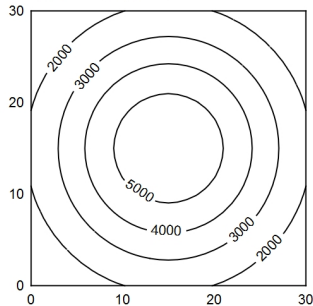
CEE 7/VII

A70 | 100.0% Φ: 550 lm



30 x 30 cm 0° Φ: 550 lm

Em: 3261 lx
Emax: 5572 lx
Emin: 1223 lx



Light source	LED
Work equipment	Electronic ballast in housing
Connected load	100 - 240 V; AC; 50 Hz; 60 Hz
Power consumption	ca. 9 W
Luminous flux	approx. 550 lm
Luminous efficiency	approx. 61 lm/W
Light type/-color	Cold white
Colour temperatur	approx. 5.000 K
Color rendering index	CRI ≥ 80
Light distribution	Wide beam; Direct
Beam angle	30°
Chromaticity tolerance LED	< 4 SDCM
Glare control	Screen
Luminance (L65)	≤ 6.000 cd/m ²
System of protection	IP 20 [IP65]
Class of protection	I
Technology	Switchable; Continuously dimmable
Operation	Push button
Housing	Aluminium; Anodised; Black
Light source cover	Borosilicate
Arm	Black
Weight (net)	ca. 2,7 kg
Mains lead	ca. 3 m; Mains plug: CEE 7/VII
Fastening	Table clamp (accessory); Wall bracket (accessory); Screw-down flange
Add-on lens	Not available
Maximum ambient temperature	25 °C
Special features	Flood

Arm-mounted luminaire ROCIA.focus
RFD 600/850/D

113181000-00680167

