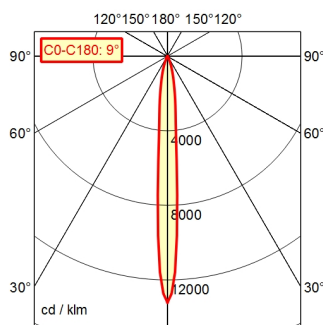


CE



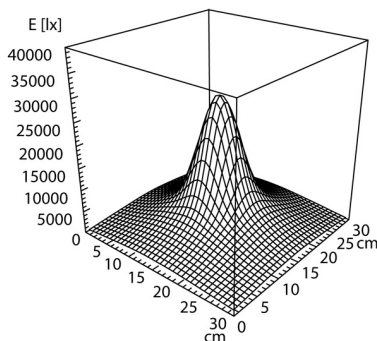
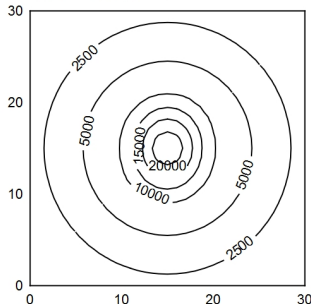
CEE 7/VII

A80 | 100.0% Φ: 600 lm



30 x 30 cm Φ: 600 lm

Em: 5010 lx
Emax: 28559 lx
Emin: 839 lx



Light source

Work equipment

Connected load

Power consumption

Luminous flux

Luminous efficiency

Light type/-color

Colour temperatur

Color rendering index

Light distribution

Beam angle

Chromaticity tolerance LED

Glare control

Luminance (L65)

Unified glare rating (4H 8H)

System of protection

Class of protection

Technology

Operation

Housing

Light source cover

Arm

Weight (net)

Mains lead

Fastening

Add-on lens

Maximum ambient temperature

Special features

LED

Electronic ballast in housing

100 - 240 V; AC; 50 Hz; 60 Hz

ca. 9 W

approx. 600 lm

approx. 66 lm/W

Cold white

approx. 5.000 K

CRI ≥ 80

Narrow-beam; Direct

10°

< 4 SDCM

Screen

≤ 4.000 cd/m²

≤ 16

IP 20 [IP65]

I

Switchable; Continuously dimmable; -

Push button

Aluminium; Anodised; Black

Borosilicate

Flexible metal tube; Black

ca. 3 kg

ca. 3,2 m; Mains plug; CEE 7/VII

Table clamp (accessory); Wall bracket (accessory);

Screw-down flange

Not available

25 °C

Spot

Flexible-tube luminaire ROCIA.focus
RFF 600/850/D

113183000-00668996

