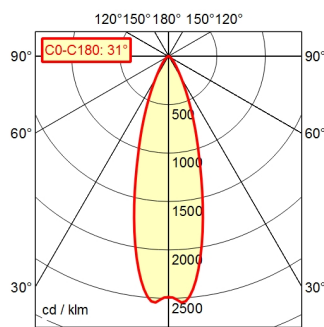


CE



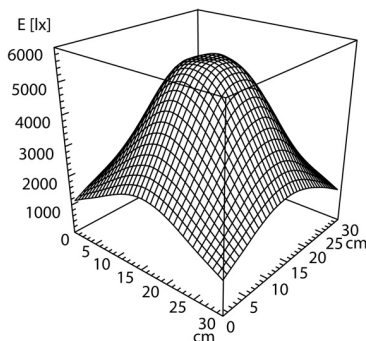
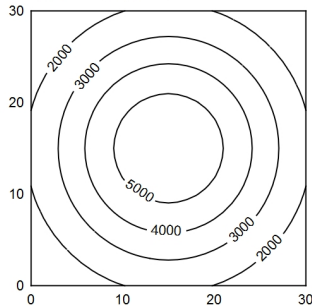
CEE 7/VII

A70 | 100.0% Φ: 550 lm



30 x 30 cm 0° Φ: 550 lm

Em: 3261 lx
Emax: 5572 lx
Emin: 1223 lx



Light source

Work equipment

Connected load

Power consumption

Luminous flux

Luminous efficiency

Light type/-color

Colour temperatur

Color rendering index

Light distribution

Beam angle

Chromaticity tolerance LED

Glare control

Luminance (L65)

Unified glare rating (4H 8H)

System of protection

Class of protection

Technology

Operation

Housing

Light source cover

Arm

Weight (net)

Mains lead

Fastening

Add-on lens

Maximum ambient temperature

Special features

LED

Electronic ballast in housing

100 - 240 V; AC; 50 Hz; 60 Hz

ca. 9 W

approx. 550 lm

approx. 61 lm/W

Cold white

approx. 5.000 K

CRI ≥ 80

Wide beam; Direct

30°

< 4 SDCM

Screen

≤ 6.000 cd/m²

≤ 19

IP 20 [IP65]

I

Switchable; Continuously dimmable; -

Push button

Aluminium; Anodised; Black

Borosilicate

Flexible metal tube; Black

ca. 2,9 kg

ca. 3,2 m; Mains plug; CEE 7/VII

Table clamp (accessory); Wall bracket (accessory);

Screw-down flange

Not available

25 °C

Flood

**Flexible-tube luminaire ROCIA.focus
RFF 600/850/D**

113183000-00680251

