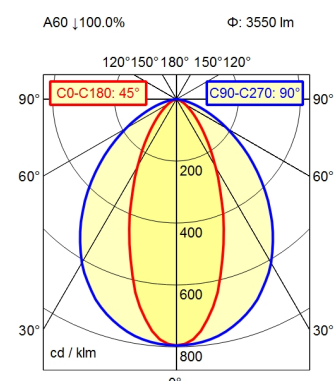
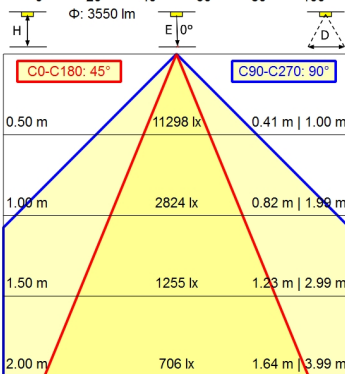
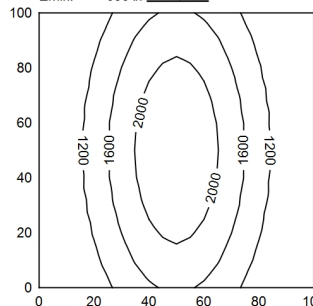


RSFM 4/0,05 P25-1



100 x 100 cm Φ : 3550 lm
Em: 1421 lx
Emax: 2293 lx
Emin: 656 lx



Light source	LED
Work equipment	Without
Connected load	20 - 28 V; DC
Power consumption	ca. 32 W
Luminous flux	approx. 3.550 lm
Luminous efficiency	approx. 110 lm/W
Light type/color	Cold white
Colour temperatur	approx. 5.000 K
Color rendering index	CRI \geq 80
Light distribution	Narrow-beam; Direct; Symmetric
Beam angle	40°/90°
Chromaticity tolerance LED	< 4 SDCM
Glare control	Without
Luminance (L65)	\leq 56.000 cd/m ²
Unified glare rating (4H 8H)	\leq 22
System of protection	IP 67
Class of protection	III
Technology	Switchable; -
Operation	External
Housing	Aluminium; Anodised; Aluminium coloured anodised Borosilicate; Clear
Light source cover	
Weight (net)	ca. 1,5 kg
Mains lead	Built-in plug; RSFM 4/0,05 P25-1
Design	mounted version
Fastening	L-angle; Clamp
Dimension	A=1040 mm
Minimum ambient temperature	0 °C
Maximum ambient temperature	50 °C

Surface-mounted luminaire MACH LED PLUS.forty MLAL 84 S

113262000-00800754

