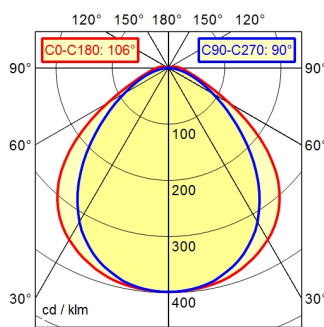


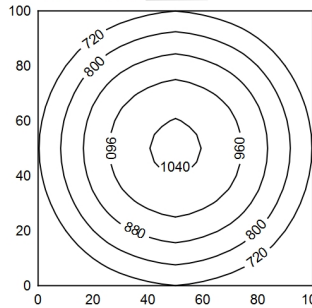
series 272

A40 | 98.6% ↑ 1.4% Φ: 3100 lm



100 x 100 cm Φ: 3100 lm

Em: 828 lx
Emax: 1047 lx
Emin: 580 lx



H Φ: 3100 lm E | 0° D

0.50 m	4941 lx	1.33 m 1.01 m
1.00 m	1235 lx	2.65 m 2.04 m
1.50 m	549 lx	3.98 m 3.02 m
2.00 m	309 lx	5.30 m 4.03 m

Light source	LED
Work equipment	Without
Connected load	230 V; AC; 50 Hz; 60 Hz
Power consumption	ca. 40 W
Luminous flux	approx. 3.100 lm
Luminous efficiency	approx. 77 lm/W
Light type/-color	Cold white
Colour temperatur	approx. 5.000 K
Color rendering index	CRI ≥ 80
Light distribution	Direct
Direct ratio	approx. 99 %
Beam angle	100°
Chromaticity tolerance LED	< 4 SDCM
Glare control	Diffuser foil
Luminance (L65)	≤ 17.000 cd/m ²
System of protection	IP 67
Class of protection	I
Technology	Switchable; -
Operation	External
Housing	Polycarbonate (PC), clear
Light source cover	Polycarbonate (PC)
Weight (net)	ca. 2,1 kg
Mains lead	Connector; series 272
Fastening	Pipe clamp (accessory)
Dimension	A=790 mm D=736 mm
Light output	A with screwed cable gland
Side part	
Maximum ambient temperature	40 °C
Special features	Light forming