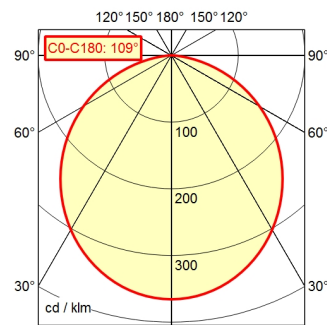


CE



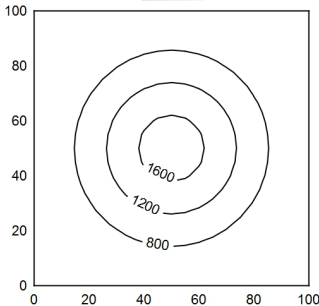
CEE 7/XXVII

A40 ↓ 100.0%      Φ: 1350 lm



100 x 100 cm      Φ: 1350 lm

Em: 787 lx  
Emax: 1721 lx  
Emin: 260 lx



**Light source**

**Work equipment**

**Connected load**

**Power consumption**

**Luminous flux**

**Luminous efficiency**

**Light type/-color**

**Colour temperatur**

**Color rendering index**

**Light distribution**

**Direct ratio**

**Beam angle**

**Chromaticity tolerance LED**

**Glare control**

**Luminance (L65)**

**Unified glare rating (4H 8H)**

**System of protection**

**Class of protection**

**Technology**

**Operation**

**Housing**

**Light source cover**

**Arm**

**Balance of articulation joints**

**Weight (net)**

**Mains lead**

**Fastening**

LED

Electronic transformer

100 - 240 V; AC; 50 Hz; 60 Hz

ca. 18 W

approx. 1.350 lm

approx. 75 lm/W

Cold white

approx. 5.000 K

CRI ≥ 80

Direct

approx. 100 %

110°

< 4 SDCM

See luminaire type

≤ 22.000 cd/m<sup>2</sup>

≤ 28

IP 20 [IP65]

I

Continuously dimmable; -

Push button

Painted; Jet black

Polycarbonate (PC); White opal

Tubular aluminium section; Anodized; Black

Spring

ca. 2,2 kg

ca. 3,8 m; Mains plug; CEE 7/XXVII

Table clamp (accessory); Wall bracket (accessory);

Screw-down flange