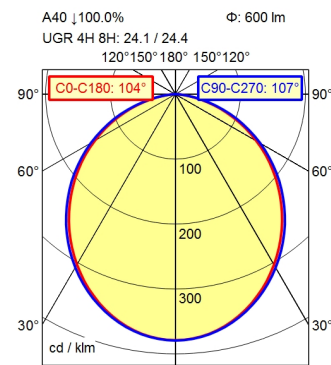


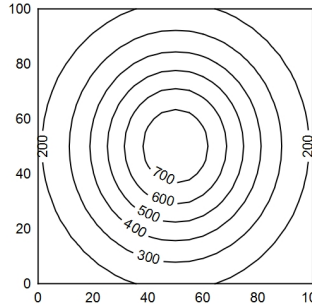
CEE 7/XVI

BS 1363

NEMA 1-15P



100 x 100 cm    Φ: 600 lm  
 Em: 353 lx  
 Emax: 758 lx  
 Emin: 116 lx



Height (m)	Beam Angle	Light Intensity (lx)	Beam Diameter (m)
0.25	CO-C180: 104° / C90-C270: 107°	3640 lx	0.64 m   0.67 m
0.50		910 lx	1.28 m   1.34 m
0.75		404 lx	1.92 m   2.01 m
1.00		227 lx	2.56 m   2.68 m

- light source
- work equipment
- connected load
- secondary tension
- power consumption
- sec. power consumption
- luminous flux
- luminous efficiency
- light type/color
- colour temperatur
- color rendering index
- light distribution
- direct ratio
- beam angle
- chromaticity tolerance LED
- luminance (L65)
- unified glare rating (4H 8H)
- class of protection
- technology
- operation
- housing
- cover
- arm
- weight (net)
- mains lead
- fastening
- decorative contrast side parts

- LED
- electronic transformer
- 100 - 240 V; alternating current (AC); 50 Hz; 60 Hz
- 24 V
- ca. 12 W
- ca. 10 W
- approx. 600 lm
- approx. 60 lm/W
- cold white
- approx. 5.000 K
- CRI > 90; R9 > 50
- direct
- approx. 100 %
- 110°
- < 3 SDCM
- <= 23000 cd/m<sup>2</sup>
- <= 28
- II with plug-in power supply, III without plug-in power supply
- Touch DIM
- multi-function switch
- aluminium coloured anodised
- milky; plastic
- silver metallic
- ca. 2 kg
- ca. 3 m; mains plug; CEE 7/XVI; BS 1363; NEMA 1-15P
- table base
- black

