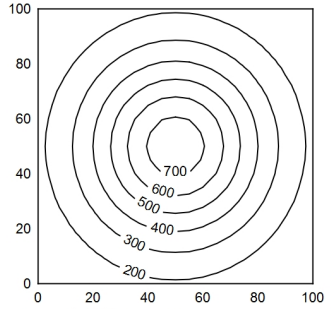
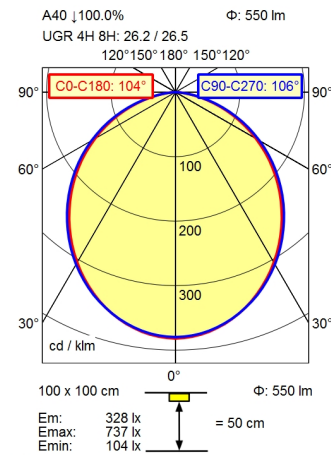


- CEE 7/XXVI
- BS 1363
- NEMA 1-15P



Height (m)	Beam Diameter (m)	Illuminance (lx)
0.25	0.64 0.67	3362
0.50	1.28 1.33	840
0.75	1.92 2.00	374
1.00	2.56 2.66	210

- light source
- work equipment
- connected load
- secondary tension
- power consumption
- sec. power consumption
- luminous flux
- luminous efficiency
- light type/-color
- colour temperatur
- color rendering index
- light distribution
- direct ratio
- beam angle
- chromaticity tolerance LED
- luminance (L65)
- unified glare rating (4H 8H)
- class of protection
- technology
- operation
- housing
- cover
- arm
- weight (net)
- mains lead
- fastening
- decorative contrast side parts

- LED
- electronic transformer
- 100 - 240 V; alternating current (AC); 50 Hz; 60 Hz
- 24 V
- ca. 14 W
- ca. 12 W
- approx. 550 lm
- approx. 45 lm/W
- D50 standard light; cold white
- approx. 5.000 K
- CRI > 95; R9 > 85
- direct
- approx. 100 %
- 110°
- < 3 SDCM
- <= 23000 cd/m²
- <= 28
- II with plug-in power supply, III without plug-in power supply
- Touch DIM
- multi-function switch
- aluminium coloured anodised
- milky; plastic
- silver metallic
- ca. 2,3 kg
- ca. 3 m; mains plug; CEE 7/XXVI; BS 1363; NEMA 1-15P
- table base
- black

Arm-mounted luminaire TANEO
TND 700/D50/D
113734000-00810077

