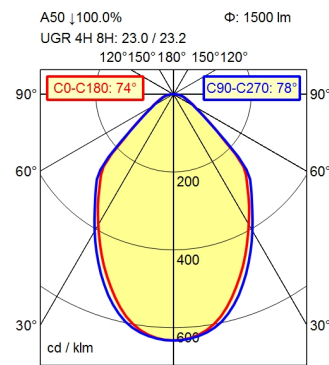
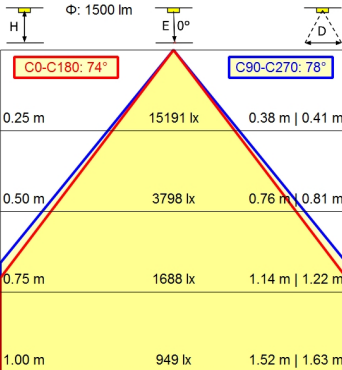
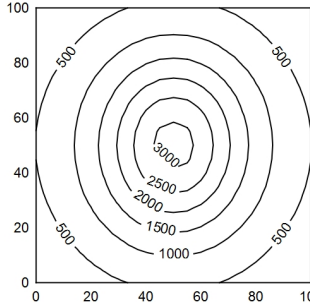


CEE 7/VII



100 x 100 cm Φ : 1500 lm
 Em: 1158 lx
 Emax: 3050 lx
 Emin: 217 lx
 = 50 cm



Light source	LED
Work equipment	Electronic transformer
Connected load	100 - 240 V; AC; 50 Hz; 60 Hz
Secondary tension	24 V
Power consumption	ca. 23 W
Sec. power consumption	ca. 20 W
Luminous flux	approx. 1.500 lm
Luminous efficiency	approx. 75 lm/W
Light type/-color	adjustable white
Colour temperatur	approx. 3.000 K; 4.000 K; 5.000 K; 6.500 K
Color rendering index	CRI \geq 90; R9 \geq 50
Light distribution	Direct
Direct ratio	approx. 100 %
Beam angle	75°
Chromaticity tolerance LED	< 3 SDCM
Luminance (L65)	\leq 12.000 cd/m ²
Unified glare rating (4H 8H)	\leq 25
System of protection	IP 20
Class of protection	I with plug-in power supply; III without plug-in power supply Touch DIM
Technology	Multi-function switch
Operation	Aluminium coloured anodised
Housing	Structured; Plastic
Light source cover	Silver metallic
Arm	Spring
Balance of articulation joints	ca. 2,3 kg
Weight (net)	ca. 3,4 m; Mains plug; CEE 7/VII
Mains lead	Tap16; Table clamp (accessory); Screw-down flange
Fastening	Black
Decorative contrast side parts	

Arm-mounted luminaire TANE0
TND 1400/930-965/D
113735000-00810081

