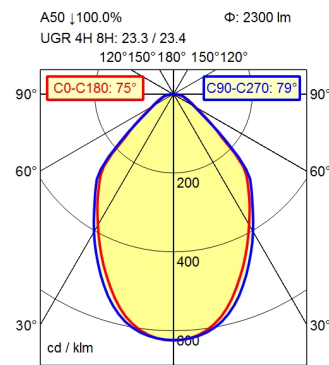
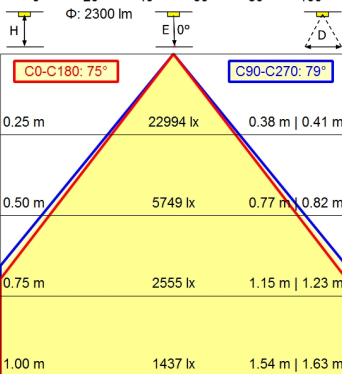
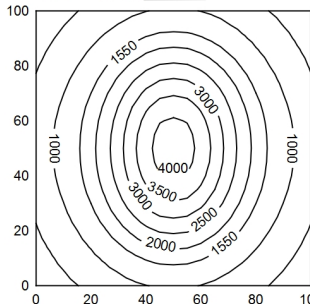


CEE 7/VII



100 x 100 cm Φ : 2300 lm
 Em: 1719 lx
 Emax: 4129 lx
 Emin: 378 lx
 = 50 cm



Light source

Work equipment

Connected load

Secondary tension

Power consumption

Sec. power consumption

Luminous flux

Luminous efficiency

Light type/-color

Colour temperatur

Color rendering index

Light distribution

Direct ratio

Beam angle

Chromaticity tolerance LED

Luminance (L65)

Unified glare rating (4H 8H)

System of protection

Class of protection

Technology

Operation

Housing

Light source cover

Arm

Balance of articulation joints

Weight (net)

Mains lead

Fastening

Add-on lens

Decorative contrast side parts

LED

Electronic transformer

100 - 240 V; AC; 50 Hz; 60 Hz

24 V

ca. 30 W

ca. 26 W

approx. 2.300 lm

approx. 88 lm/W

Cold white

approx. 4.000 K

CRI \geq 90; R9 \geq 50

Direct

approx. 100 %

75°

< 3 SDCM

\leq 12.000 cd/m²

\leq 25

IP 20

I with plug-in power supply; III without plug-in

power supply

Touch DIM

Multi-function switch

Aluminium coloured anodised

Structured; Plastic

Silver metallic

Spring

ca. 2,3 kg

ca. 3,4 m; Mains plug: CEE 7/VII

Tap16; Table clamp (accessory); Screw-down flange

Not available

Black

