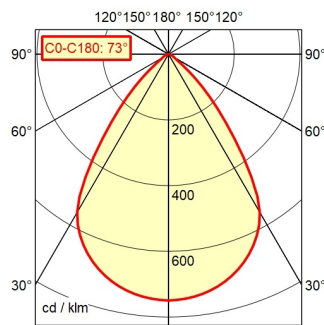


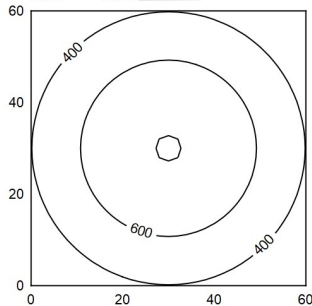
CEE 7/XXVI

A60 | 100.0% Φ: 300 lm



60 x 60 cm Φ: 300 lm

Em: 522 lx
Emax: 806 lx
Emin: 199 lx



Light source

Work equipment

Connected load

Secondary tension

Power consumption

Sec. power consumption

Standby

Power factor

Luminous flux

Luminous efficiency

Light type/-color

Colour temperatur

Color rendering index

Light distribution

Direct ratio

Beam angle

Chromaticity tolerance LED

Glare control

System of protection

Class of protection

Technology

Operation

Housing

Light source cover

Arm

Balance of articulation joints

Weight (net)

Mains lead

Fastening

Energy efficiency class

Special features

LED module

Electronic plug-in transformer

100 - 240 V; AC; 50 Hz; 60 Hz

5 V

ca. 4 W

ca. 3,5 W

ca. 0,3 W

env. 0,97

approx. 300 lm

approx. 96 lm/W

Cold white

approx. 4.000 K

CRI ≥ 80

Direct

approx. 100 %

73°

< 3 SDCM

Screen

IP 20

II with plug-in power supply, III without plug-in power supply

Continuously dimmable; DC control signal

Push button

Plastic; Untreated; Umbra grey

Polycarbonate (PC); Satine

Tubular aluminium section; Anodized; Tubular section upright; Titanium

Friction

ca. 1,9 kg

ca. 1,5 m; Mains plug; CEE 7/XXVI

Adaptor (accessory); Table clamp (accessory); Table base

E

Push button in luminaire head