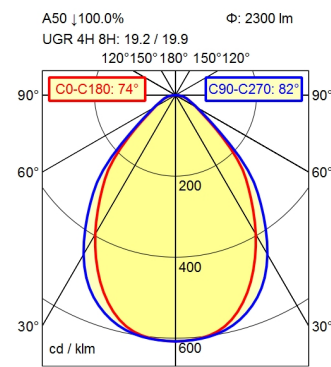
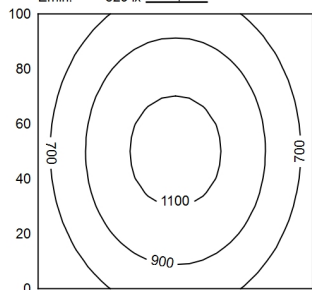


2 pin

1 pin



100 x 100 cm Φ : 2300 lm
Em: 863 lx
Emax: 1163 lx
Emin: 529 lx



Φ : 2300 lm
E | 0°

Height (m)	Beam Diameter (m)	Light Intensity (lx)
0.50 m	0.76 m 0.87 m	5596 lx
1.00 m	1.51 m 1.73 m	1399 lx
1.50 m	2.27 m 2.60 m	622 lx
2.00 m	3.03 m 3.46 m	350 lx

Light source

Work equipment

Connected load

Power consumption

Luminous flux

Luminous efficiency

Light type/color

Colour temperatur

Color rendering index

Light distribution

Direct ratio

Beam angle

Chromaticity tolerance LED

Glare control

Luminance (L65)

Unified glare rating (4H 8H)

System of protection

Class of protection

Technology

Operation

Housing

Light source cover

Weight (net)

Mains lead

Design

Fastening

Decorative contrast side parts

LED

Electronic ballast dimable digital

220 - 240 V; AC; 50 Hz; 60 Hz

ca. 32 W

approx. 2.300 lm

approx. 71 lm/W

adjustable white

approx. 3.000 - 6.500 K

CRI \geq 90; R9 \geq 50

Direct

approx. 100 %

75°

< 3 SDCM

Conical prismatic screen

\leq 3.800 cd/m²

\leq 22

IP 20

I

Continuously dimmable; Radio-controlled; -

External

Aluminium/plastic; Anodised; Aluminium coloured anodised

Structured; Plastic

ca. 4,3 kg

ca. 0,08 m; Connector; 2 pin; 1 pin

Mounted version

extension range of rise-and-fall pendant 0.3 - 1.3 m

Black

Workplace-system luminaire Tameto SAHZQ 66 RC

114266000-00805794

