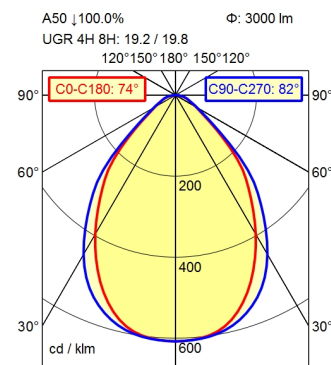
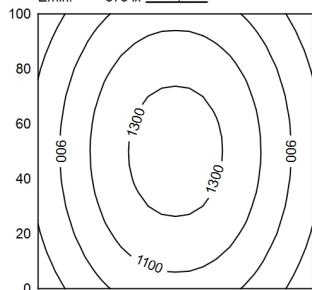


2 pin

1 pin



100 x 100 cm Φ : 3000 lm
Em: 1054 lx
Emax: 1383 lx
Emin: 673 lx



H Φ : 3000 lm E | 0° D

Height (m)	Beam Diameter (m)	Light Intensity (lx)
0.50 m	0.76 m 0.87 m	7299 lx
1.00 m	1.51 m 1.73 m	1825 lx
1.50 m	2.27 m 2.60 m	811 lx
2.00 m	3.03 m 3.46 m	456 lx

Light source

Work equipment

Connected load

Power consumption

Luminous flux

Luminous efficiency

Light type/color

Colour temperatur

Color rendering index

Light distribution

Direct ratio

Beam angle

Chromaticity tolerance LED

Glare control

Luminance (L65)

System of protection

Class of protection

Technology

Operation

Housing

Light source cover

Weight (net)

Mains lead

Design

Fastening

Decorative contrast side parts

LED

Electronic ballast dimmable digital

220 - 240 V; AC; 50 Hz; 60 Hz

ca. 39 W

approx. 3.000 lm

approx. 76 lm/W

adjustable white

approx. 3.000 - 6.500 K

CRI \geq 90; R9 \geq 50

Direct

approx. 100 %

75°

< 3 SDCM

Conical prismatic screen

\leq 3.800 cd/m²

IP 20

I

Continuously dimmable; Radio-controlled; -

External

Aluminium/plastic; Anodised; Aluminium coloured anodised

Structured; Plastic

ca. 5,8 kg

ca. 0,08 m; Connector; 2 pin; 1 pin

Mounted version

extension range of rise-and-fall pendant 0.3 - 1.3 m

Black

Workplace-system luminaire Tameto SAHZQ 88 RC

114267000-00805795

