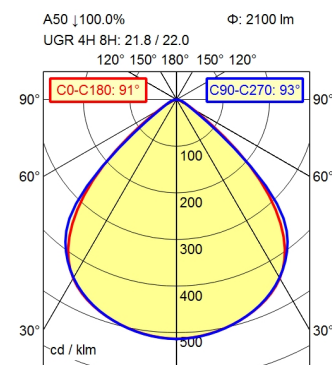
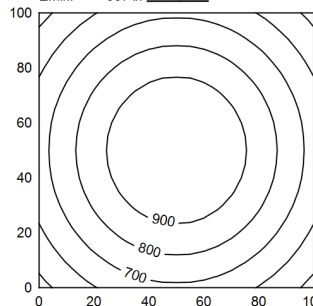


M12-A-5



100 x 100 cm Φ: 2100 lm
Em: 783 lx
Emax: 1004 lx
Emin: 537 lx
= 100 cm



Height (m)	Beam Diameter (m)	Beam Diameter (m)	Illuminance (lx)
0.50	1.02	1.05	4311
1.00	2.04	2.08	1078
1.50	3.06	3.14	479
2.00	4.08	4.19	269

Light source	LED
Work equipment	Without
Connected load	24 V; DC
Power consumption	ca. 17 W
Luminous flux	approx. 2.100 lm
Luminous efficiency	approx. 123 lm/W
Light type/-color	Cold white
Colour temperatur	approx. 5.000 K
Color rendering index	CRI ≥ 80; R9 ≥ 10
Light distribution	Direct; Symmetric
Beam angle	91°
Chromaticity tolerance LED	< 3 SDCM
Glare control	Screen
Luminance (L65)	≤ 5.200 cd/m ²
Unified glare rating (4H 8H)	≤ 22
System of protection	IP 67
Class of protection	III
Technology	Multi-stage switchable
Operation	External
Housing	Aluminium; Anodised; Aluminium coloured anodised Borosilicate
Light source cover	
Weight (net)	ca. 1,6 kg
Mains lead	Built-in plug; M12-A-5
Design	mounted version
Fastening	Snap-fit
Dimension	A=565 mm
Minimum ambient temperature	0 °C
Maximum ambient temperature	50 °C
Special features	ADVANCED package

