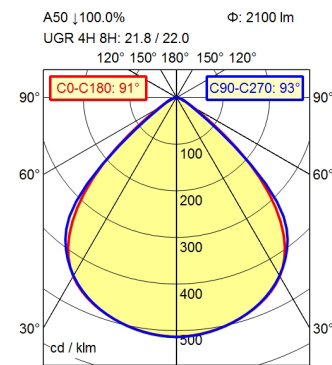
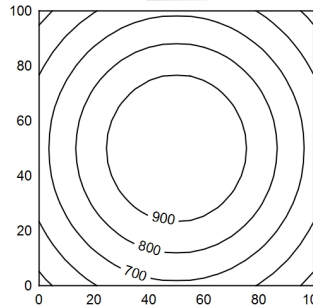


M12-A-5



100 x 100 cm Φ : 2100 lm
Em: 783 lx
Emax: 1004 lx
Emin: 537 lx



Height (m)	Beam Angle	Beam Diameter (m)	Beam Diameter (ft)	Center Illuminance (lx)
0.50	C0-C180: 91°	1.02	1.05	4311
1.00	C0-C180: 91°	2.04	2.08	1078
1.50	C0-C180: 91°	3.06	3.14	479
2.00	C0-C180: 91°	4.08	4.19	269

Light source	LED
Work equipment	Without
Connected load	24 V; DC
Power consumption	ca. 17 W
Luminous flux	approx. 2.100 lm
Luminous efficiency	approx. 123 lm/W
Light type/-color	Cold white
Colour temperatur	approx. 5.000 K
Color rendering index	CRI \geq 80; R9 \geq 10
Light distribution	Direct; Symmetric
Beam angle	91°
Chromaticity tolerance LED	< 3 SDCM
Glare control	Screen
Luminance (L65)	\leq 5.200 cd/m ²
Unified glare rating (4H 8H)	\leq 22
System of protection	IP 67
Class of protection	III
Technology	Multi-stage switchable
Operation	External
Housing	Aluminium; Anodised; Aluminium coloured anodised Borosilicate
Light source cover	
Weight (net)	ca. 1,4 kg
Mains lead	Built-in plug; M12-A-5
Design	Integrated version
Fastening	Snap-fit
Dimension	A=573 mm
Installation dimensions	ca. 559 mm; 64 mm; 30 mm
Minimum ambient temperature	0 °C
Maximum ambient temperature	50 °C
Special features	ADVANCED package

Recessed luminaire ACURIA.perfect APE 2200/850/MS

114320000-00806663

