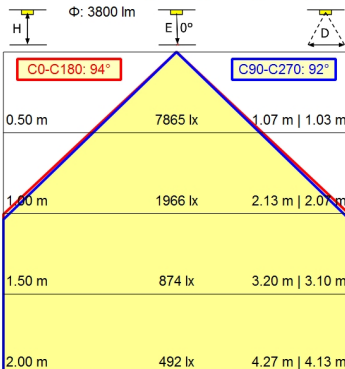
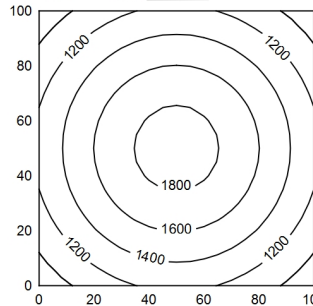
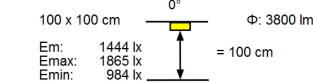
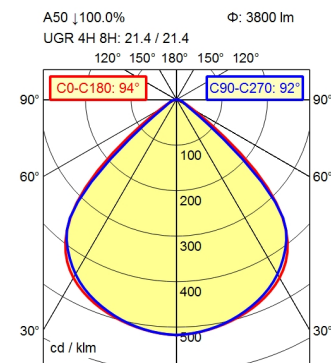


M12-A-5



<b>Light source</b>	LED
<b>Work equipment</b>	Without
<b>Connected load</b>	24 V; DC
<b>Power consumption</b>	ca. 28 W
<b>Luminous flux</b>	approx. 3.800 lm
<b>Luminous efficiency</b>	approx. 135 lm/W
<b>Light type/-color</b>	Cold white
<b>Colour temperatur</b>	approx. 5.000 K
<b>Color rendering index</b>	CRI $\geq$ 80; R9 $\geq$ 10
<b>Light distribution</b>	Direct; Symmetric
<b>Beam angle</b>	92°
<b>Chromaticity tolerance LED</b>	< 3 SDCM
<b>Glare control</b>	Screen
<b>Luminance (L65)</b>	$\leq$ 4.200 cd/m <sup>2</sup>
<b>Unified glare rating (4H 8H)</b>	$\leq$ 22
<b>System of protection</b>	IP 67
<b>Class of protection</b>	III
<b>Technology</b>	Multi-stage switchable
<b>Operation</b>	External
<b>Housing</b>	Aluminium; Anodised; Aluminium coloured anodised Borosilicate
<b>Light source cover</b>	
<b>Weight (net)</b>	ca. 2,4 kg
<b>Mains lead</b>	Built-in plug; M12-A-5
<b>Design</b>	Integrated version
<b>Fastening</b>	Snap-fit
<b>Dimension</b>	A=398 mm
<b>Installation dimensions</b>	ca. 384 mm; 164 mm; 30 mm
<b>Minimum ambient temperature</b>	0 °C
<b>Maximum ambient temperature</b>	50 °C
<b>Special features</b>	ADVANCED package

# Recessed luminaire ACURIA.perfect APE 4000/850/MS

114323000-00806655

