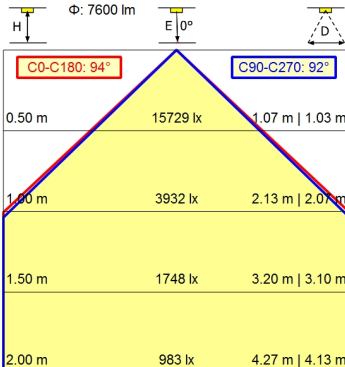
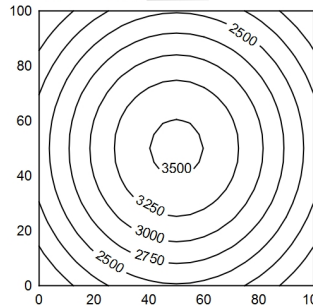
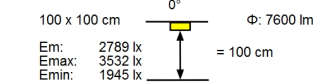
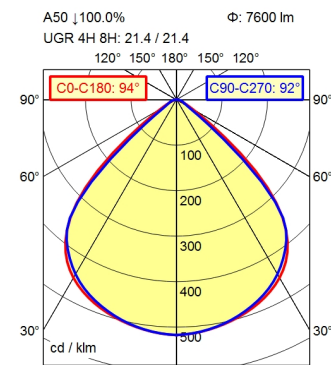


M12-A-5



Light source	LED
Work equipment	Without
Connected load	24 V; DC
Power consumption	ca. 56 W
Luminous flux	approx. 7.600 lm
Luminous efficiency	approx. 135 lm/W
Light type/-color	Cold white
Colour temperatur	approx. 5.000 K
Color rendering index	CRI \geq 80; R9 \geq 10
Light distribution	Direct; Symmetric
Beam angle	92°
Chromaticity tolerance LED	< 3 SDCM
Glare control	Screen
Luminance (L65)	\leq 4.200 cd/m ²
Unified glare rating (4H 8H)	\leq 22
System of protection	IP 67
Class of protection	III
Technology	Multi-stage switchable
Operation	External
Housing	Aluminium; Anodised; Aluminium coloured anodised Borosilicate
Light source cover	
Weight (net)	ca. 4,6 kg
Mains lead	Built-in plug; M12-A-5
Design	Integrated version
Fastening	Snap-fit
Dimension	A=748 mm
Installation dimensions	ca. 734 mm; 164 mm; 30 mm
Minimum ambient temperature	0 °C
Maximum ambient temperature	50 °C
Special features	ADVANCED package

Recessed luminaire ACURIA.perfect APE 8000/850/MS

114325000-00806659

