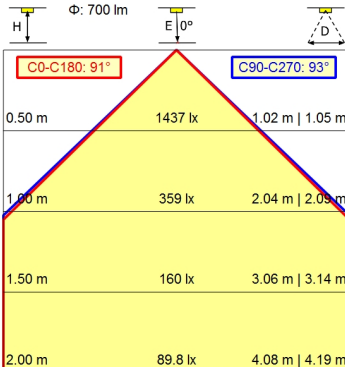
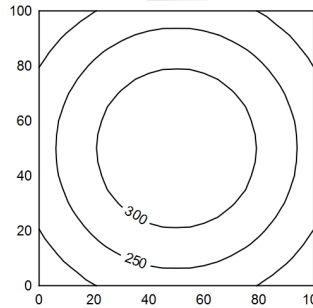
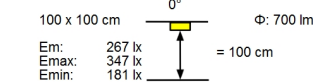
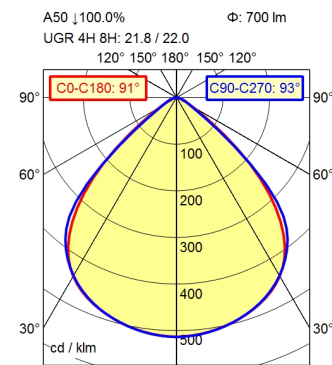


M12-A-5



<b>Light source</b>	LED
<b>Work equipment</b>	Without
<b>Connected load</b>	24 V; DC
<b>Power consumption</b>	ca. 6 W
<b>Luminous flux</b>	approx. 700 lm
<b>Luminous efficiency</b>	approx. 116 lm/W
<b>Light type/-color</b>	Cold white
<b>Colour temperatur</b>	approx. 5.000 K
<b>Color rendering index</b>	CRI ≥ 80; R9 ≥ 10
<b>Light distribution</b>	Direct; Symmetric
<b>Beam angle</b>	91°
<b>Chromaticity tolerance LED</b>	< 3 SDCM
<b>Glare control</b>	Screen
<b>Luminance (L65)</b>	≤ 5.200 cd/m <sup>2</sup>
<b>System of protection</b>	IP 67
<b>Class of protection</b>	III
<b>Technology</b>	Multi-stage switchable
<b>Operation</b>	External
<b>Housing</b>	Aluminium; Anodised; Aluminium coloured anodised Borosilicate
<b>Light source cover</b>	
<b>Weight (net)</b>	ca. 0,6 kg
<b>Mains lead</b>	Built-in plug; M12-A-5
<b>Design</b>	mounted version
<b>Fastening</b>	Screws
<b>Dimension</b>	A = 227,5mm, C = 207,5mm
<b>Minimum ambient temperature</b>	0 °C
<b>Maximum ambient temperature</b>	50 °C
<b>Special features</b>	ADVANCED package

# Surface-mounted luminaire ACURIA.perfect APA 720/850/MS

114465000-00811563

