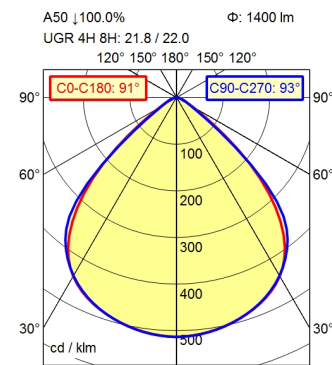
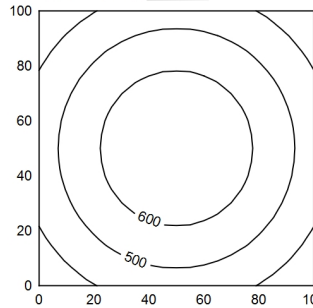


M12-A-5



100 x 100 cm $\Phi: 1400 \text{ lm}$
 Em: 530 lx
 Emax: 685 lx
 Emin: 360 lx



Height (m)	Beam Diameter (lm)	Beam Angle (°)	Light Intensity (lx)	Beam Diameter (m)
0.50	1400	91° / 93°	2874	1.02 m 1.05 m
1.00	1400	91° / 93°	719	2.04 m 2.09 m
1.50	1400	91° / 93°	319	3.06 m 3.14 m
2.00	1400	91° / 93°	180	4.08 m 4.19 m

Light source	LED
Work equipment	Without
Connected load	24 V; DC
Power consumption	ca. 12 W
Luminous flux	approx. 1.400 lm
Luminous efficiency	approx. 116 lm/W
Light type/color	Cold white
Colour temperatur	approx. 5.000 K
Color rendering index	CRI \geq 80; R9 \geq 10
Light distribution	Direct; Symmetric
Beam angle	91°
Chromaticity tolerance LED	< 3 SDCM
Glare control	Screen
Luminance (L65)	\leq 5.200 cd/m ²
System of protection	IP 67
Class of protection	III
Technology	Multi-stage switchable
Operation	External
Housing	Aluminium; Anodised; Aluminium coloured anodised Borosilicate
Light source cover	
Weight (net)	ca. 1,1 kg
Mains lead	Built-in plug; M12-A-5
Design	mounted version
Fastening	Screws
Dimension	A = 402,5 mm, C = 382,5mm
Minimum ambient temperature	0 °C
Maximum ambient temperature	50 °C
Special features	ADVANCED package

Surface-mounted luminaire ACURIA.perfect
APA 1450/850/MS
114466000-00811567

