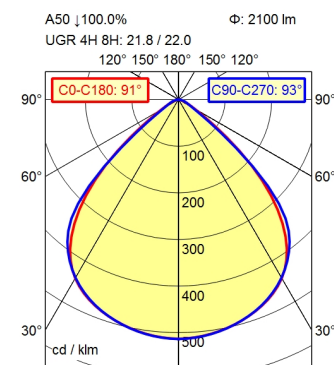
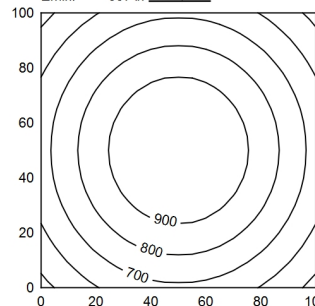


M12-A-5



100 x 100 cm Φ : 2100 lm
 Em: 783 lx
 Emax: 1004 lx
 Emin: 537 lx



Height (m)	Beam Angle	Light Intensity (lx)	Width (m)
0.50	91° / 93°	4311 lx	1.02 m 1.05 m
1.00	91° / 93°	1078 lx	2.04 m 2.08 m
1.50	91° / 93°	479 lx	3.06 m 3.14 m
2.00	91° / 93°	269 lx	4.08 m 4.19 m

Light source	LED
Work equipment	Without
Connected load	24 V; DC
Power consumption	ca. 17 W
Luminous flux	approx. 2.100 lm
Luminous efficiency	approx. 123 lm/W
Light type/-color	Cold white
Colour temperatur	approx. 5.000 K
Color rendering index	CRI \geq 80; R9 \geq 10
Light distribution	Direct; Symmetric
Beam angle	91°
Chromaticity tolerance LED	< 3 SDCM
Glare control	Screen
Luminance (L65)	\leq 5.200 cd/m ²
Unified glare rating (4H 8H)	\leq 22
System of protection	IP 67
Class of protection	III
Technology	Multi-stage switchable
Operation	External
Housing	Aluminium; Anodised; Aluminium coloured anodised Borosilicate
Light source cover	
Weight (net)	ca. 1,6 kg
Mains lead	Built-in plug; M12-A-5
Design	mounted version
Fastening	Screws
Dimension	A = 577,5mm, C = 557,5mm
Minimum ambient temperature	0 °C
Maximum ambient temperature	50 °C
Special features	ADVANCED package

