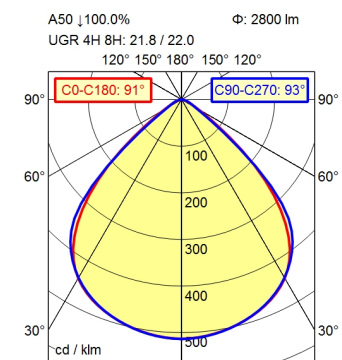
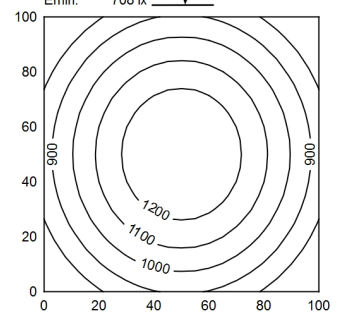


M12-A-5



100 x 100 cm Φ : 2800 lm
 Em: 1022 lx
 Emax: 1298 lx
 Emin: 708 lx



Height (m)	Beam Diameter (m)	Beam Diameter (ft)	Center Lux (lx)
0.50	1.02	1.05	5748
1.00	2.04	2.08	1437
1.50	3.06	3.14	639
2.00	4.08	4.19	359

Light source	LED
Work equipment	Without
Connected load	24 V; DC
Power consumption	ca. 22 W
Luminous flux	approx. 2.800 lm
Luminous efficiency	approx. 127 lm/W
Light type/-color	Cold white
Colour temperatur	approx. 5.000 K
Color rendering index	CRI \geq 80; R9 \geq 10
Light distribution	Direct; Symmetric
Beam angle	91°
Chromaticity tolerance LED	< 3 SDCM
Glare control	Screen
Luminance (L65)	\leq 5.200 cd/m ²
Unified glare rating (4H 8H)	\leq 22
System of protection	IP 67
Class of protection	III
Technology	Multi-stage switchable
Operation	External
Housing	Aluminium; Anodised; Aluminium coloured anodised Borosilicate
Light source cover	
Weight (net)	ca. 2,1 kg
Mains lead	Built-in plug; M12-A-5
Design	mounted version
Fastening	Screws
Dimension	A = 752,5mm, C = 732,5mm
Minimum ambient temperature	0 °C
Maximum ambient temperature	50 °C
Special features	ADVANCED package

Surface-mounted luminaire ACURIA.perfect
APA 2900/850/MS
114469000-00811573

