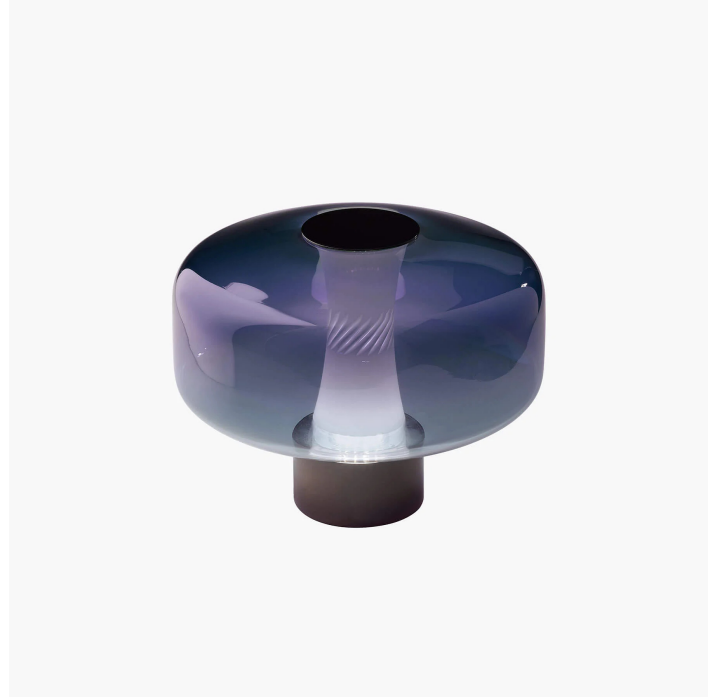


4040/L Solene

DANILO DE ROSSI

Generale

Collection of suspension, table and wall lamps in blown glass with shaded blue violet or shaded gold finish. Internal diffuser in hand-carved white blown glass diffuser. Metal structure with iron grey finish.



WORLDWIDE

Dimensions	Light Source	Kg	Dimming	Dimming on request
Ø 33 - h 25	7,8w - 1000 lumen - CRI>80 - 3000K	4	PUSH	

NORTH AMERICA

Dimensions	Light Source	Lb	Dimming	Dimming on request
Ø 13 - h 10	7,8w - 1000 lumen - CRI>80 - 3000K	9	PUSH	

CODE	Structure METAL	Body GLASS	Body GLASS
04040L00 001	CDF Iron grey	BLUE VIOLET	<input type="radio"/> WHITE
04040L00 002	CDF Iron grey	GOLD SHADED	<input type="radio"/> WHITE

Note

Technical drawing, dimensions and light sources refer to the main photo variant.

Dimming on request could lead to an increase in the size of the canopy.

For available color variants, consult the technical data sheet.